



115-300HP

MERCURY[®]
PRO XS[®]



EXPLORERS DON'T ALWAYS QUIT WHEN THEY FIND WHAT THEY'RE LOOKING FOR.

The water is full of trophies, world records and bragging rights. Cold-blooded, unpredictable brutes ready to put your line and your heart to the test. It's an unending quest. And we've still never met an angler who was willing to settle for just one fish of a lifetime.

02
MERCURY PRO XS®



WHEN EVERY CAST MAKES A DIFFERENCE, SO DOES EVERY SECOND.

The best anglers aren't lucky. They're fast. They're the first ones to the best spots. The ones who can travel the farthest the fastest. The first ones with their lines in the water and the last ones to leave for weigh-in. The ones who spend the most time fishing while they're fishing.

Mercury Pro XS® outboards provide a powerful competitive edge. From 115 to 300hp, each Pro XS model uses Mercury®-exclusive components and tuning to amplify performance. They're the product of hard work and precision engineering. Nothing lucky about it.





V6 PRO XS®

V8 PRO XS®

175 HORSEPOWER
3.4 LITERS

200/225/250/300 HORSEPOWER
4.6 LITERS

ENGINEERED FOR ASAP

For competitive tournament anglers or boaters who simply crave power, the choice is simple. No other outboard goes from zero to wide open as quickly as the Mercury Pro XS. With generous displacement and a performance-tuned dual-overhead-cam design, the V8 and V6 family of Pro XS engines delivers instant throttle response at any rpm. It's thunderous power and lightning speed. Pure, unapologetic muscle.





MOVE AND BE MOVED

Drop the hammer, get pinned to your seat. The Mercury Pro XS family of four-cylinder outboards delivers performance you can feel. With the largest displacement and best power-to-weight ratio in its class, the Pro XS outboard produces unparalleled torque, acceleration and high-rpm muscle. Whether running compact bass rigs, flats skiffs or multi-species boats – on freshwater or saltwater – the Mercury Pro XS is unmatched muscle for midsize boats.

INLINE-4 PRO XS®

150
HORSEPOWER

3.0
LITERS



INLINE-4 PRO XS®

115
HORSEPOWER

2.1
LITERS



THE PRO XS[®] ADVANTAGE



DRIVING EXPERIENCE

AN IMMERSIVE ATMOSPHERE OF POWER

V8 Pro XS models feature a performance-inspired exhaust tone that has been fine-tuned to create an unmistakable brawny rumble at startup, yet remain quieter than competitors at idle and cruising speeds. On V8 and V6 models, industry-first Adaptive Speed Control maintains an rpm setting without frequent throttle adjustments, so changing conditions don't affect comfort, focus or engine performance. When voltage is low, Idle Charge automatically increases idle rpm to boost alternator output, ensuring electronics such as multi-function displays keep on humming.

EFFICIENCY

MORE FUN ON LESS FUEL

Fish farther. Mercury Pro XS outboards possess the ideal combination of lightweight engineering and high displacement to maximize power, torque and overall performance. V8 and V6 models feature Advanced Range Optimization, which automatically adjusts fuel delivery for efficient cruising. Transient Spark technology - also standard on the V8 and V6 - optimizes spark timing to boost torque and efficiency.

PERFORMANCE TUNING

BUILT FOR SPEED

The high-displacement Pro XS family generates the torque to get out of the hole quickly and deliver instant throttle response at any speed. Select V8 models feature a TorqueMaster gearcase with a 1.75:1 gear ratio and 1.25-inch prop shaft, designed to optimize performance during semi-surface-piercing, high-speed runs. And with a stiff, robust engine mount, drivers won't sacrifice handling and control while operating at high rpm.

MAINTENANCE & DURABILITY

MORE TIME ON THE WATER

By adding an exclusive top cowl service door to V8 and V6 Pro XS outboards, Mercury has eliminated the need to remove the cowl to perform routine oil level checks. Color-coded touchpoints and QR codes link to maintenance instructions, making it easier to perform the service needed to maximize engine life span and performance.





THE POWER TO DO MORE

Learn more at mercurymarine.com/smartcraft.



VESSELVIEW MOBILE EVERY ENGINE HAS A STORY TO TELL

Perpetual, personalized access to engine data and more. VesselView Mobile® monitors up to four engines, all in one convenient, intuitive app. VesselView Mobile features include customizable digital gauges, performance tracking, notifications and warnings, fuel monitoring, and maintenance reminders.

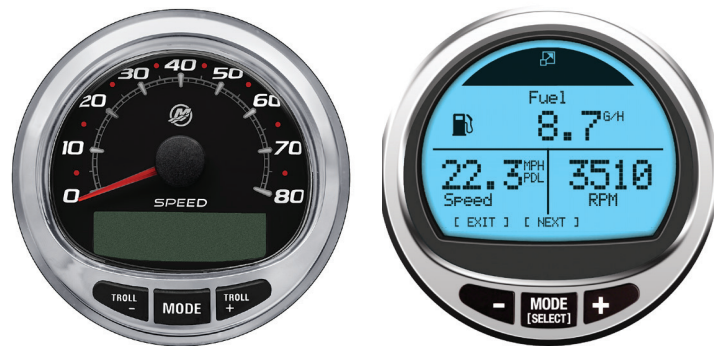


SMARTCRAFT CONNECT & VESSELVIEW LINK FROM THE TRANSOM TO THE TOUCHSCREEN

The VesselView Link adapter pairs VesselView® data and controls with multi-function displays from Simrad® and Lowrance®, enabling select SmartCraft features and aggregating chartplotting, radar, sonar, audio controls and CZone® digital switching onto one display. The SmartCraft® Connect adapter transmits engine data onto Garmin® and Raymarine® multi-function displays. Adapters accommodate up to four engines.

DIGITAL GAUGES ALL-ACCESS ENGINE DATA

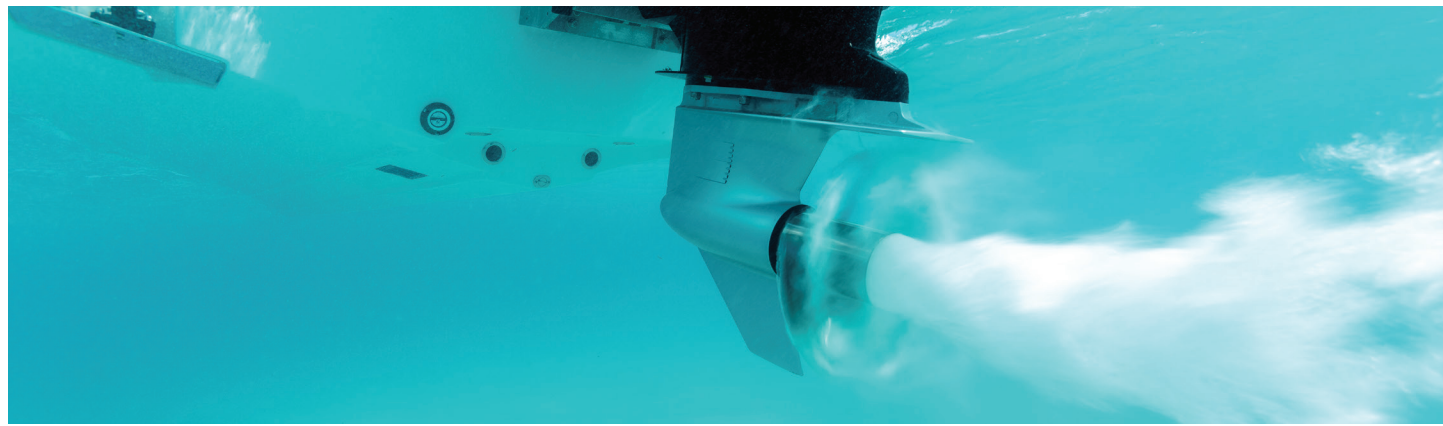
Digital monitoring that keeps you in complete control. MercMonitor, SC100 and SC1000 gauges provide precise insights into boat and motor functions such as speed, rpm, depth, trim and fuel flow, while also enabling SmartCraft technologies like Troll Control.



DIGITAL THROTTLE & SHIFT AND HOT FOOT SMOOTH AT ANY SPEED

Digital Throttle & Shift (DTS) delivers silky-smooth shifting and instant throttle response for a premium driving experience. A DTS Hot Foot pedal – compatible with 200 to 300hp Pro XS outboards – gives added control by allowing you to keep both hands on the wheel during high-speed runs.





PROPELLERS

WHERE THE RPMs MEET THE H₂O

Mercury propellers are engineered to convert every bit of Pro XS horsepower into unmatched performance. With innovative technology and superior materials behind them, Mercury props set the standard for premium design and durability.

Find the ideal prop for your outboard at mercurymarine.com/propselector.



HUB KITS

Mercury hub kits reduce noise, vibration and harshness at the source. They provide a cushion between the prop and prop shaft, enhancing durability and protecting the drivetrain from most accidental prop impacts.



PVS

Mercury props don't take anything for granted. Our exclusive Performance Vent System® (PVS) lets you custom-tune propeller venting, ensuring optimal acceleration.

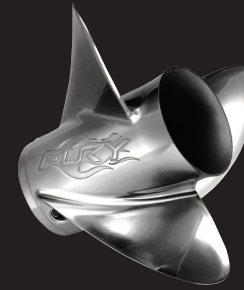
EXCLUSIVE METALS

Meet the materials made specifically to propel Mercury engines. X7® stainless-steel alloy is 4x more durable and 30% stronger than conventional stainless, allowing Mercury to design props that would otherwise be impossible.

Mercalloy® aluminum is designed specifically for the die-cast process, helping us produce high-quality props, free of porosity for increased strength.

HIGH-PERFORMANCE PROPS

Peak performance from every rpm of Pro XS power.



FURY®

Revolutionary performance for tournament bass boats

Available pitches	22, 23, 24, 25, 26, 27
Rotation	RH
Boat type	Bass, inshore fishing
Material	X7 Alloy



FURY 4®

Top-performing propeller for tournament-weighted loads

Available pitches	24, 25, 26
Rotation	RH
Boat type	Bass, fish and ski, inflatable - rigid hull (RIB), multi-species fish
Material	X7 Alloy



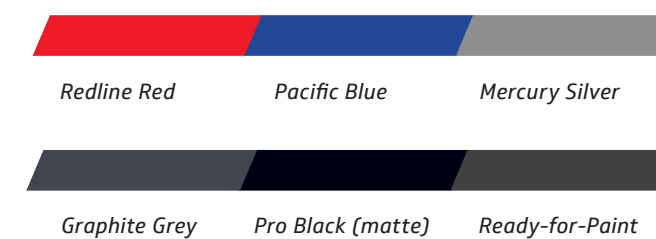


GRAPHICS PACKAGE

POWERFUL, INSIDE AND OUT. THE TOTAL PACKAGE.

The Mercury Pro XS family features an aggressive graphics package to match its powerful performance specs and brawny voice. For added personalization, V8 and V6 engines can be outfitted with available accent panels in five colors or a customizable, paint-ready option.

ACCENT PANEL COLOR OPTIONS





SERVICE & MAINTENANCE

FEWER WORRIES, MORE TIME ON THE WATER

Learn more at mercurymarine.com/find-a-dealer.



WARRANTY

A Mercury Pro XS outboard is made to last. Every engine comes backed with class-leading corrosion protection, a three-year limited warranty and an industry-exclusive three-year corrosion warranty.



MERCURY PRODUCT PROTECTION

A factory-backed extended service contract, Mercury Product Protection covers certain defects in material and workmanship beyond the term of the Mercury limited warranty for up to eight years of coverage.



DEALER NETWORK

If your engine requires service, an extensive network of factory-trained dealers and master technicians is ready with genuine Mercury replacement parts and accessories to get you back on the water.



PRECISION CARE

Mercury Precision Parts® provide original factory fit and performance to help keep your engine running like new and performing at its peak. Mercury Precision Lubricants® are specially formulated and tested to exceed our high standards and keep engines running smoothly, no matter where your days take you.

PRO XS® SPECIFICATIONS

HP	115 / 115 CT	150
WOT rpm:	5300-6300	5200-6000
Engine Type:	Inline-4 (8-valve, SOHC)	Inline-4 (8-valve, SOHC)
Displacement:	2.1L (126 cu in)	3.0L (183 cu in)
Induction:	Performance-tuned scroll intake manifold	Performance-tuned scroll intake manifold
Starting:	Electric start with SmartStart Protection	Electric start with SmartStart Protection
Gear Ratio:	2.07:1 / 2.38:1	2.08:1
Alternator:	35 amp (441 watt)	60 amp (756 watt)
Trim System:	Power trim and tilt	Power trim and tilt
Dry Weight:	359lbs (163kg) / 363lbs (165kg)	456lbs (206kg)
Steering:	Remote or tiller	Remote or Big Tiller
Fuel Compatibility:	87 octane minimum / up to 10% ethanol	87 octane minimum / up to 10% ethanol
Shaft Length:	20 in (508mm) / 25 in (635mm)	20 in (508mm) / 25 in (635mm)



HP	175	200	225	250	300
WOT rpm:	5400-6000	5600-6200	5600-6200	5600-6200	5600-6200
Engine Type:	V6 (24-valve, DOHC)	V8 (32-valve, DOHC)	V8 (32-valve, DOHC)	V8 (32-valve, DOHC)	V8 (32-valve, DOHC)
Displacement:	3.4L (209 cu in)	4.6L (279 cu in)	4.6L (279 cu in)	4.6L (279 cu in)	4.6L (279 cu in)
Induction:	Performance-tuned long-runner intake manifold	Performance-tuned long-runner intake manifold	Performance-tuned long-runner intake manifold	Performance-tuned long-runner intake manifold	Performance-tuned long-runner intake manifold
Starting:	Electric start with SmartStart Protection	Electric start with SmartStart Protection	Electric start with SmartStart Protection	Electric start with SmartStart Protection	Electric start with SmartStart Protection
Gear Ratio:	1.85:1	1.75:1 / 1.85:1	1.75:1	1.75:1	1.75:1
Alternator:	85 amp (1071 watt)	85 amp (1071 watt)	85 amp (1071 watt)	85 amp (1071 watt)	85 amp (1071 watt)
Trim System:	Power trim and tilt	Power trim and tilt	Power trim and tilt	Power trim and tilt	Power trim and tilt
Dry Weight:	475 lbs (216kg)	511 lbs (232kg)	511 lbs (232kg)	511 lbs (232kg)	511 lbs (232kg)
Steering:	Hydraulic Power Big Tiller	Hydraulic Power Big Tiller	Hydraulic Power Big Tiller	Hydraulic Power Big Tiller	Hydraulic Power Big Tiller
Fuel Compatibility:	87 octane minimum / up to 10% ethanol	87 octane minimum / up to 10% ethanol	87 octane minimum / up to 10% ethanol	87 octane minimum / up to 10% ethanol	87 octane minimum / up to 10% ethanol
Shaft Length:	20 in (508mm) / 25 in (635mm)	20 in (508mm) / 25 in (635mm)	20 in (508mm) / 25 in (635mm)	20 in (508mm) / 25 in (635mm)	20 in (508mm) / 25 in (635mm)

*Dry weight specification is for the lightest-version model. Note: Due to our constant efforts to offer the finest products available, we reserve the right to change specifications without notice. Visit MercuryMarine.com or your Mercury Authorized Dealer for more engine specs and test results.



MERCURY

GO BOLDLY.®

CZONE is a registered trademark of Power Products, LLC. GARMIN is a registered trademark of Garmin Ltd. LOWRANCE is a registered trademark of Navico Holding AS Corporation. RAYMARINE is a registered trademark of Teledyne FLIR, LLC. SIMRAD is a registered trademark of Kongsberg Maritime AS Company. All other trademarks belong to Brunswick Corporation.

Product information in this brochure is accurate as of May, 2022. For the latest content, please visit [MercuryMarine.com](https://www.MercuryMarine.com)

8M0189590